

# Alaska Department of Fish and Game

Habitat Section  
Southeast Region



## 114-31-10130-2022-3003-4007-5300 Tributary 1

## ADDITION

**Water body name:**

**Survey date:** 9/9/2021; 6/28/2022

**Quad:** Sitka D-5

**Species & Lifestage:**

**Upper Reach Latitude:** 57.946736 **Longitude:** -135.397046

**Survey crew:** RR, FC, BL, MR

**Lower Reach Latitude:** 57.946473 **Longitude:** -135.398704

**Findings:** We surveyed this uncataloged stream using a backpack electrofisher, baited minnow traps, and GPS. We captured juvenile coho salmon, Dolly Varden, and cutthroat trout. The tributary stream falls over a 3-to-4 ft tall log jam and additional log/debris jams prior to flowing through a 4 ft wide culvert (Table 1; Figures 1–3).

**Recommendations:** Add this uncataloged stream to the anadromous waters catalog for rearing coho salmon (Figure 4).

**Nomination:** Pending

Table 1.—114-31-10130-2022-3003-4007-5300 tributary 1 survey data.

Waypoint	Latitude	Longitude	Notes	Stream Width ft	Stream Substrate	Habitat Features	Gradient %	Sample Effort	Sample Results
873	57.946954	-135.394826	3-4' falls, considering a temporary barrier to juvenile fish passage, only resident fish found above. Tributary on river-left.					Not Fished	
874	57.946989	-135.395410	Stream has good habitat, but many potential temporary barriers to juvenile fish passage downstream.	4-6	Small Gravel Large Gravel	Spawning Substrate	2-4	EF	No Fish
875	57.946780	-135.396184						EF	3 DV 2 CT
876	57.946732	-135.397071	Young-of-year coho caught upstream of culvert.	4-6	Small Gravel Large Gravel	Spawning Substrate Cut Banks	2-4	EF	2 CO
2381	57.946775	-135.397453	Minnow trap set downstream of culvert. 4' CMP perched 8" into 2' pool.	4-6	Large Gravel Small Gravel		2-4	MT	No Fish



Figure 1.—Juvenile coho salmon captured at waypoint 876.



Figure 2.—Channel at waypoint 875.



Figure 3.—Log jam falls at waypoint 873.



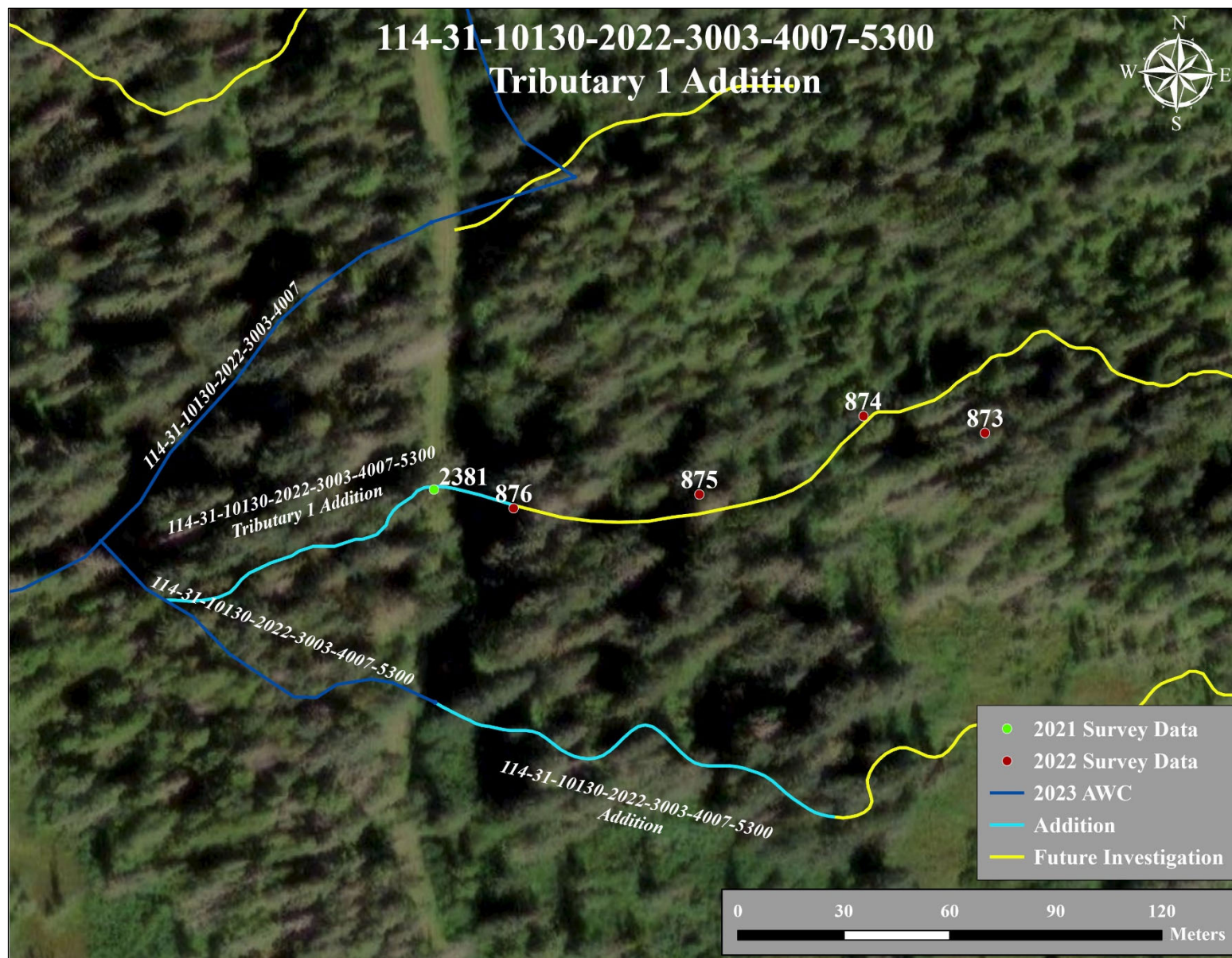


Figure 4.–114-31-10130-2022-3003-4007-5300 tributary 1 addition map.